

SPECIFICATIONS

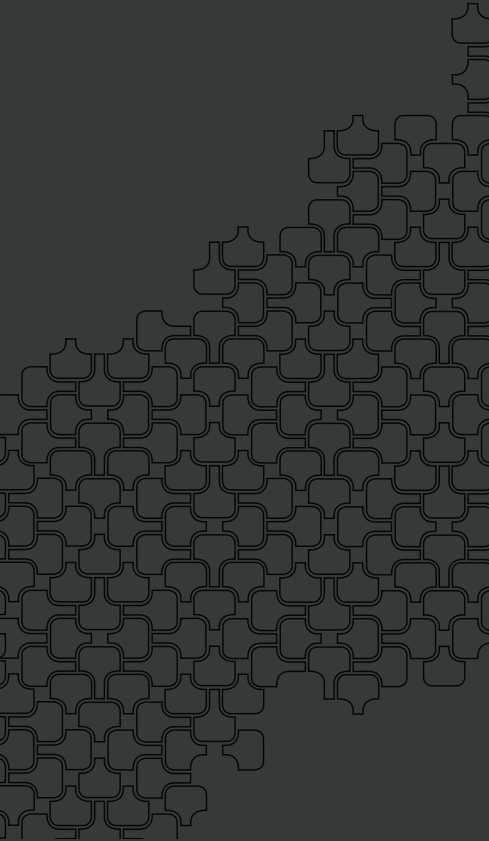
STRUCTURE	- Reinforced concrete frame
WALLS	- Brick wall / Reinforced concrete wall / Dry wall
CEILINGS	- Fibrous plaster / Skim coat paint
WINDOWS	
Frame	- Powder-coated aluminium frame windows
Glazing	- Low-E laminated glazing to main spaces and bedrooms
	- Laminated glass to all other areas
*BALUSTRADE	- Tempered glass balustrade
*SUN SHADE DOORS	- High-quality sliding louvers in PVDF coated aluminium frame
Main Entrance	- Custom design solid core timber door
Bedrooms	- Custom design solid core timber door
Balcony	- Powder-coated aluminium frame sliding door with Low-E glazing
Shower screens	- Quality tempered glass shower screen
General Interior	- Selected quality timber doors or concealed joinery doors
Ironmongery	- High quality imported selections including Formani® Piet Boon series, Frits Jurgens® and others
WALL FINISHES	
General Living, Kitchens and Bedrooms	- High quality low-VOC water-based paint
Bathrooms and Powder Room	- Quality imported marble / plaster & high quality low-VOC water based paint (wherever applicable)
Other Wet Areas and Maid's Bathroom	- Selected quality homogenous tiles
Balcony	- Aluminium cladding / GRC cladding / Plaster and paint
Pool Deck, Private Outdoor Areas	- Aluminium cladding / GRC cladding / Plaster and paint
FLOOR FINISHES	
Gallery, Hallway, Dry and Wet Kitchens, Bathrooms, Walk-in Wardrobe, Powder Room	- Quality imported marble with matching wall skirting (wherever applicable)
Living, Dining, Bedrooms, Study	- Engineered white oak timber floor laid in herringbone pattern
Other Wet Areas and Maid's Bathroom	- Selected quality homogenous tiles
Pool Deck, Private Outdoor Areas	- Selected quality imported granite or solid timber decking
FITTINGS*	
Sanitary and Plumbing Fittings	- High quality imported selections including Formani® Piet Boon series, Duravit, Vola and Cocoon
Vanity and Countertops	- Counter top finished with selected quality imported marble to all bathrooms except Maid's Bathroom (wherever applicable)
	- Dry Kitchen countertop with imported engineered ceramic
	- Wet Kitchen countertop with imported quartz
Cabinetry and Wardrobe	- Exclusively designed by Studio Piet Boon
Air-conditioning	- Individually controlled concealed ducted air-conditioning
Intercom	- Video-equipped intercom system
Switches	- JUNG switches
Water heater	- Storage and instantaneous water heater (wherever applicable)

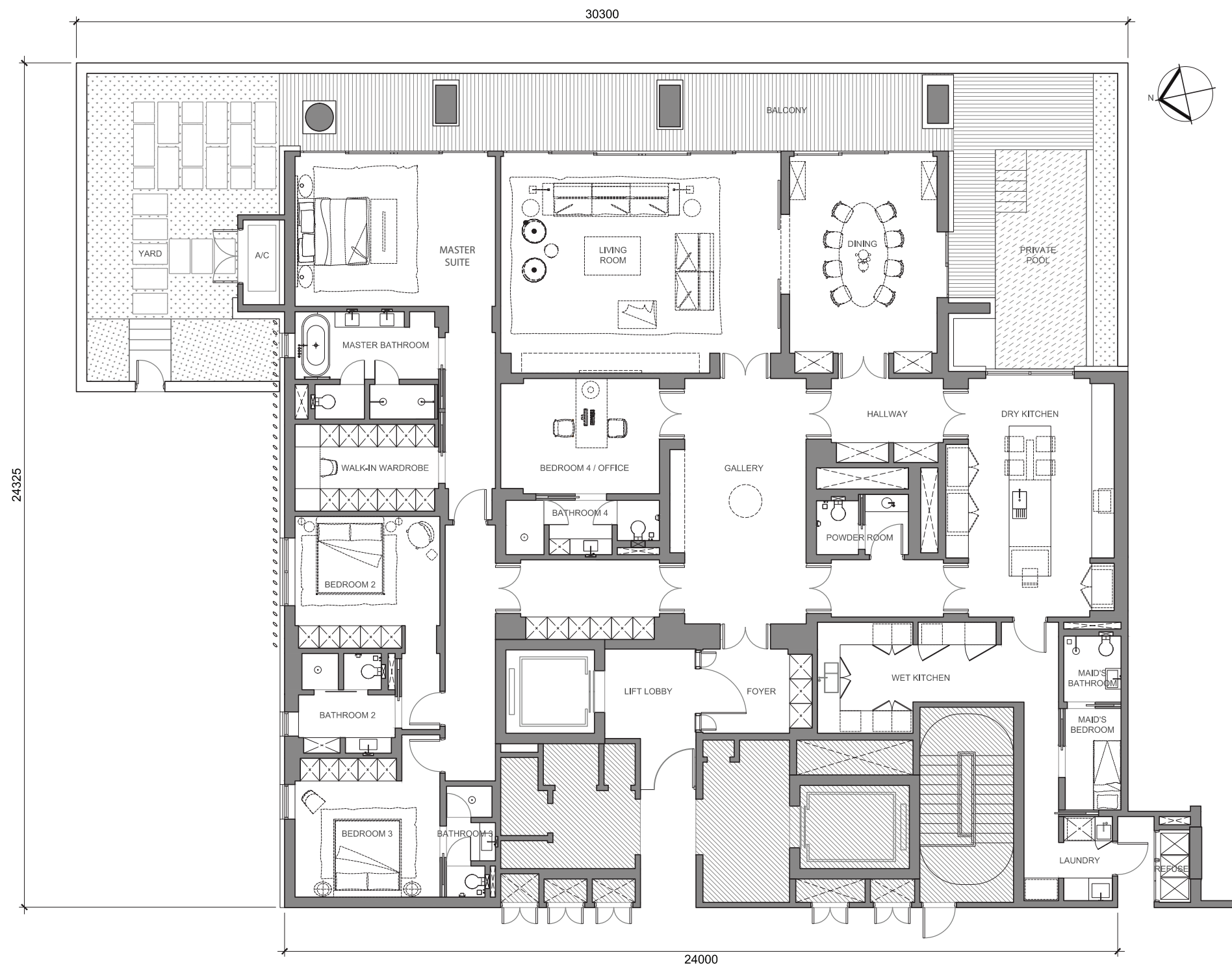
8 JALAN BATAI
DAMANSARA HEIGHTS
50490 KUALA LUMPUR
MALAYSIA
+603 2727 7474
AIRARESIDENCE.COM

AIRA
RESIDENCE

Refers to RESIDENSI AIRA DAMANSARA
A prestigious development by:
 SELANGOR PROPERTIES SDN. BHD
The Art of Living Here
Company No. 196301000340 (S199-X)

T Y P E
E





Unit Size : 5,856 sf
Floor - Ceiling Height : 3 m

*These items are additional to and shall not be set out in the building description under the Fourth Schedule of the Sale and Purchase agreement, but shall be contained in the relevant agreement or document with the developer.

The sanitary and plumbing fittings shall comprise but not limited to the product or material from, (Formani Piet Boon Series, Duravit, Vola and Cocoon), wherever applicable.

All illustrations and pictures are artist's impressions only. This brochure shall not be construed or deemed to be representation or warranty by the developer in any manner howsoever nor constitute or form part of an offer or contract. The interior design, finishes, loose items, decorations, materials, accessories and specifications stated or contained in this brochure are only for conceptual illustration and the convenience of reference, and are not necessarily part of the actual details, specification, completion or delivery of the development or the units, and all of the same including its brands (1) (if any) shall be subject to availability and construction variances, and the developer may make changes thereto or deviations therefrom without being responsible or liable for any costs, damages, loss or compensation towards the purchasers, provided always that such changes or deviations is a substitution or use of other materials of equivalent or comparable quality.

All information contained herein shall not be relied upon as representations or warranties, express or implied, of the final or actual details, specifications, completion or delivery of the development or the units. The developer expressly reserves the right to make modifications, revisions, amendments, variations and changes as it deems fit, necessary or desirable in its sole and absolute discretion from time to time without any prior notice to or agreement of the purchaser. Whilst every reasonable care has been taken in providing the information herein as at the date of printing of this brochure, the developer shall not be held responsible or liable howsoever for any modifications, revisions, amendments, variations and changes, and any inaccuracy, discrepancy, error, inconsistency and mistake now or hereafter.

Purchasers are advised to refer to the actual information, specifications and plans as contained in the Sale and Purchase agreement and the deed of mutual covenants to be entered into between the developer and the purchaser.

TYPE	SPACE	ROOM SIZE	
		Sqm	Sqft
E	Foyer	9.00	97
	Gallery	31.30	337
	Hallway	33.10	356
	Living	53.00	570
	Dining	40.50	436
	Dry Kitchen	34.00	366
	Wet Kitchen	20.10	216
	Master Suite	37.00	398
	Bedroom 2	20.50	221
	Bedroom 3	20.00	215
	Bedroom 4 / Office	18.00	194
	Walk-in Wardrobe	12.00	129
	Master Bathroom	14.50	156
	Bathroom 2	10.00	108
	Bathroom 3	5.50	59
	Bathroom 4 / Office Toilet	8.50	92
	Maid's Bathroom	4.50	48
	Powder Room	10.00	108
	Utility / Maid's Room	10.00	108
	Laundry / Yard	7.50	81
	Private Pool/ Lawn/ Deck/ A/C Ledge	145.00	1561

PIET BOON DESIGNED WARDROBE CABINETS

TYPE	AREA	TOTAL USABLE SPACE (m³)
E	Master	10.0
	Bedroom 2	4.2
	Bedroom 3	4.4
Grand Total		18.6

PIET BOON DESIGNED KITCHEN CABINETS

TYPE	AREA	ISLAND CABINETS (m³)	BASE AND WALL CABINETS (m³)	TALL CABINETS (m³)	TOTAL USABLE SPACE (m³)
E	Dry	2.5	3.6	10.5	16.6
	Wet		3.3	1.5	4.8
	Laundry		1.0	2.4	3.4
Grand Total					24.8